



## SLANTED EXHAUST TIPS

541

### PARTS INCLUDED

- 2 Slanted Exhaust Tips—Chrome
- 2 Spacer Rings—**FOR USE ON SLIP STREAM MUFFLERS**
- 1 Hardware Kit Containing:
  - 4 1/4"-20 X 5/8" Button Socket Cap Screws
  - 6 Step Washers—**FOR USE ON SLIP STREAM MUFFLERS**
  - 6 1/4"-20 X 5/8" Socket Head Cap Screws—**FOR USE ON SLIP STREAM MUFFLERS**
- 1 Installation Instructions

Please read and understand entire instructions before starting installation.

### THANK YOU FOR CHOOSING KÜRYAKYN!

**IN ORDER TO PROTECT YOU AND OTHERS FROM POSSIBLE INJURY AND/OR PROPERTY DAMAGE OR LOSS, PLEASE PAY CLOSE ATTENTION TO ALL INSTRUCTIONS, WARNINGS, CAUTIONS AND NOTICES REGARDING THE USE AND CARE OF THIS PRODUCT.**

#### **WARNING**

**THIS INDICATION ALERTS YOU TO THE FACT THAT IGNORING THE CONTENTS DESCRIBED HEREIN CAN RESULT IN POTENTIAL DEATH OR SERIOUS INJURY.**

#### **NOTICE**

**This indication alerts you to the fact that ignoring the contents described herein may negatively affect product performance and functionality.**

#### **NOTICE**

**IF INSTALLING THIS PRODUCT FOR ANOTHER PARTY, PLEASE MAKE SURE THEY RECEIVE THIS COPY OF THE INSTALLATION INSTRUCTIONS SO THEY ARE AWARE OF THE IMPORTANT INFORMATION CONTAINED IN THEM.**

### TOOLS SUGGESTED

Socket Set with Ratchet or Set of Combination Wrenches, Set of Hex Wrenches, Blue Loctite

**STRICTLY OBSERVE THE FOLLOWING GUIDELINES IN ORDER TO USE THE PRODUCT PROPERLY AND AVOID POTENTIALLY DANGEROUS ACCIDENTS.**

#### STEP 1

Read and understand all steps in the instructions before starting the installation. Park the motorcycle on a hard, level surface and turn off the ignition. Let cool.

#### **WARNING**

**YOU WILL BE WORKING AROUND THE ENGINE AND EXHAUST SYSTEM DURING INSTALLATION. ENSURE THAT THE ENGINE AND EXHAUST SYSTEM HAVE FULLY COOLED TO PREVENT INJURY.**

### FOR CRUSHER MUFFLERS WITH SLIP STREAM TIP

#### STEP 2

Remove the saddlebags and set them aside.

#### STEP 3

Loosen the large clamp shown in PIC 1 enough to slide it forward and off the muffler.

### CUSTOMER SERVICE

877.370.3604 (toll free)

### INSTALLATION QUESTIONS

techsupport@kuryakyn.com  
or call 715.247.2983

### LIMITED WARRANTY

Kuryakyn warrants that any Kuryakyn products sold hereunder, shall be free of defects in materials and workmanship for a period of one (1) year from the date of purchase by the consumer excepting the following provisions:

- Kuryakyn shall have no obligation in the event the customer is unable to provide a receipt showing the date the customer purchased the product(s).
- The product must be properly installed, maintained and operated under normal conditions.
- Kuryakyn makes no warranty, expressed or implied, with respect to any gold plated products.
- Kuryakyn shall not be liable for any consequential and incidental damages, including labor and paint, resulting from failure of a Kuryakyn product, failure to deliver, delay in delivery, delivery in nonconforming condition, or for any breach of contract or duty between Kuryakyn and a customer.
- Kuryakyn products are often intended for use in specific applications. Kuryakyn makes no warranty if a Kuryakyn product is used in applications other than intended.
- Kuryakyn electrical products are warranted for one (1) year from the date of purchase by the consumer. L.E.D.'S contained in components of Kuryakyn products will be warranted for defects in materials and workmanship for 3 years from the date of purchase where as all other components shall be warranted for one(1) year. This includes, but is not limited to; control modules, wiring, chrome & other components.
- Kuryakyn makes no warranty of any kind in regard to other manufacturer's products distributed by Kuryakyn. Kuryakyn will pass on all warranties made by the manufacturer and where possible, will expedite the claim on behalf of the customer, but ultimately, responsibility for disposition of the warranty claim lies with the manufacturer.

### ABOUT OUR CATALOG

For purchasing Kuryakyn® products, you can receive a complete catalog free of charge. Send the Proof-of-Purchase below with your address to: Kuryakyn, P.O. Box 339, Somerset, WI 54025. Please indicate either Accessories Catalog for Harley-Davidson® or GL & Metric Cruisers.

Be sure to ask your local dealer about other Kuryakyn® products, the motorcycle parts and accessories designed for riders by riders.

©2005 Kuryakyn USA® All Rights reserved.



kuryakyn.com

**STEP 4** Remove the two fasteners shown in PIC 2. Set them aside, they will be re-used.

**STEP 5** Remove the muffler; twist and pull the muffler until it slides off the head pipe.

**NOTE:** A few drops of a penetrating oil applied near head pipe/muffler union will aid in removal.

**STEP 6** Remove the two button socket cap screws from the underside of the muffler. PIC 3 These go through the body to the baffle on the Slip Stream mufflers.

**STEP 8** The tip is attached to the baffle from the inside with three socket head cap screws and cannot be removed until the baffle is partially out of the body. PIC 4 To pull the baffle from the muffler, you may need to use a slide hammer with a hook end or fabricate a hook tool to pull the baffle out.

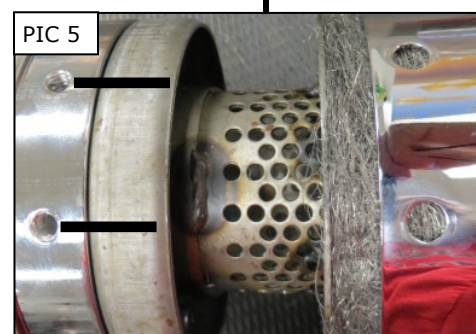
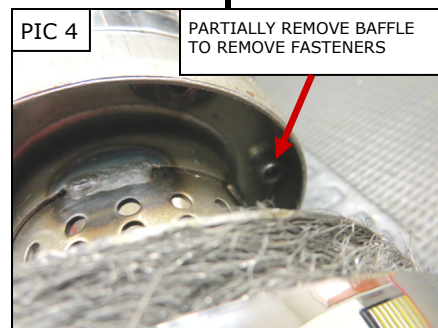
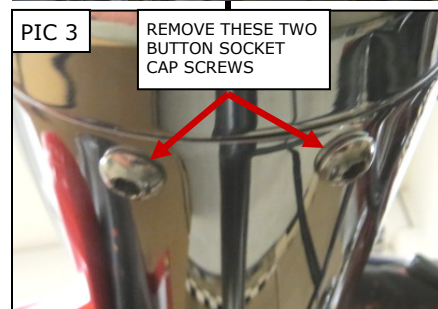
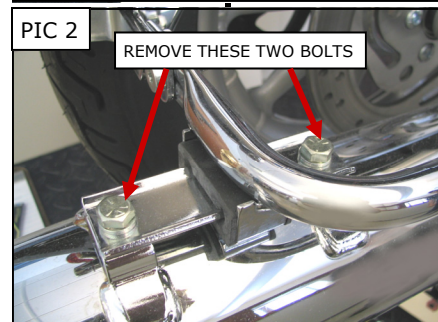
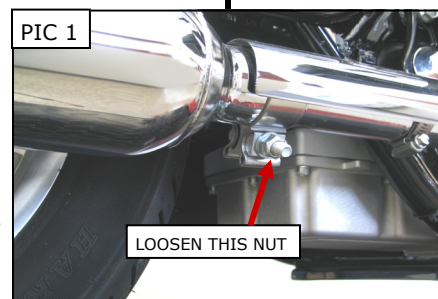
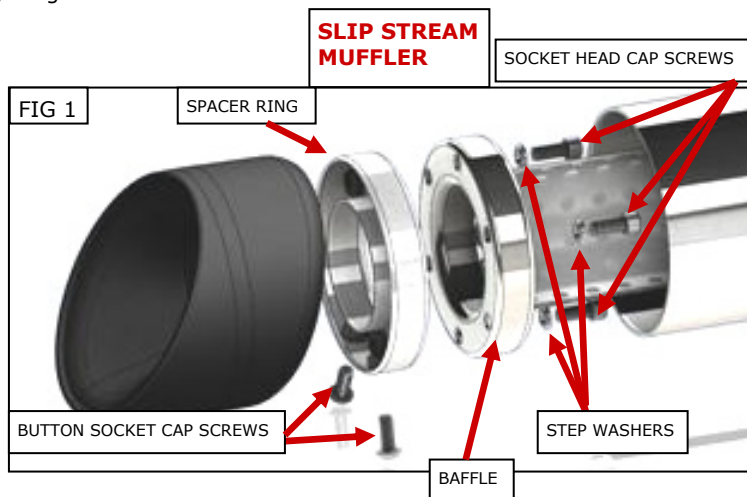
**NOTE:** If you do not feel comfortable or up to this type of task, contact a trained technician to partially remove the old baffle.

**STEP 9** Once the baffle has been partially pulled out and the tip has been removed, attach one of the included spacer rings to the end of the baffle by lining up the three non-threaded holes in the end of the baffle with the three threaded holes in the Spacer Ring. Secure with the provided 1/4"-20 X 5/8" Socket Head Cap Screws and Step Washers. FIG 1 Install the baffle assembly back into the muffler while aligning the two weld nuts on the side of the Spacer Ring with the holes in the muffler body. **(It may help with installation to draw a line from the threaded holes on the side of the Spacer Ring across the side of the baffle. This will allow you to make sure the threaded holes line up with the holes on the muffler body when the baffle is slid back into the body. PIC 5)** Attach the new Slanted Tip to the muffler by sliding the Tip on the muffler and aligning the two holes in the bottom of the Tip with the holes in the muffler body and weld nuts on the Spacer Ring. Place a drop of Blue Loctite on two of the included 1/4"-20 X 5/8" Button Socket Cap Screws and insert them through the Slanted Tip, through the muffler body and thread them into the spacer ring. Tighten securely.

**STEP 10** Repeat Steps 3 through 9 for the other muffler.

**STEP 11** Slide a muffler onto the head pipe. Make sure the muffler goes onto the head pipe past the ends of the expansion slots, the threaded weldment is to be facing up.

**STEP 12** Reinstall the two fasteners removed in STEP 4; you may need to adjust the position of the muffler to get the threaded holes to align. Leave the fasteners finger tight for now.



- STEP 13** Realign the large clamp loosened in STEP 3 and fully tighten.
- STEP 14** Tighten the two fasteners from STEP 12.
- STEP 15** Repeat STEP 11 through STEP 14 for the other muffler.
- STEP 16** Reinstall the saddlebags.

**NOTICE**

It is the installer's responsibility to ensure that all of the fasteners (including pre-assembled) are tightened before operation of the motorcycle. Küryakyn will not provide warranty coverage on products or components lost due to improper installation or lack of maintenance. Periodic inspection and maintenance are required on all fasteners.

**NOTICE**

After installation, thoroughly clean pipes with a soft clean cloth and cleaning solvent that will leave no residue (glass cleaner, alcohol, ammonia, etc...) before starting the motorcycle.

**FOR CRUSHER MUFFLERS WITH TRIDENT TIPS**

- STEP 17** Remove the saddlebags and set them aside.
- STEP 18** Remove the two button socket cap screws from the underside of the muffler. PIC 6 These go through the tips, then the body to the baffle on the Trident mufflers.
- STEP 19** Remove the three socket head cap screws that secure the tip to the baffle and remove the tip from the body. PIC 7
- STEP 20** Attach the new Slanted Tip to the muffler by sliding the Tip on the muffler and aligning the two holes in the bottom of the Tip with the holes in the muffler body and weld nuts on the baffle. Place a drop of Blue Loctite on two of the included 1/4"-20 X 5/8" Button Socket Cap Screws and insert them through the Slanted Tip, through the muffler body and thread them into the baffle. FIG 2 Tighten securely.
- STEP 21** Repeat STEP 18 through STEP 20 for the other muffler.
- STEP 22** Reinstall the saddlebags.

**NOTICE**

It is the installer's responsibility to ensure that all of the fasteners (including pre-assembled) are tightened before operation of the motorcycle. Küryakyn will not provide warranty coverage on products or components lost due to improper installation or lack of maintenance. Periodic inspection and maintenance are required on all fasteners.

**NOTICE**

After installation, thoroughly clean pipes with a soft clean cloth and cleaning solvent that will leave no residue (glass cleaner, alcohol, ammonia, etc...) before starting the motorcycle.

