



# INSTALLATION

## SMART PHONE POUCH with PERCH MOUNT

4094

### PARTS INCLUDED

- 1 Water Resistant Smart Phone Pouch Assembly
- 1 Perch Mount Arm
- 1 Pivot Mount
- 1 Hardware Kit Containing:
  - 2 Perch Mount Spacers
  - 2 1/4"-20 X 2" Button Socket Cap Screws
  - 2 1/4"-20 X 2-1/4" Button Socket Cap Screws
  - 2 M6 X 1.0 X 55mm Button Socket Cap Screws
  - 3 1/4" Flat Washers
  - 1 1/4" Lock Washer
  - 1 1/4" Low Crown Acorn Nut
  - 4 #8-32 X 3/4" Phillips Head Pan Screws
  - 4 #8 Nylock Nuts
  - 8 #8 Flat Washers
  - 4 6" Black Nylon Cable Ties
  - 1 Package Anti Seize
- 1 Installation Instructions

Please read and understand entire instructions before starting installation.

### THANK YOU FOR CHOOSING KÜRYAKYN!

**IN ORDER TO PROTECT YOU AND OTHERS FROM POSSIBLE INJURY AND/OR PROPERTY DAMAGE OR LOSS, PLEASE PAY CLOSE ATTENTION TO ALL INSTRUCTIONS, WARNINGS, CAUTIONS AND NOTICES REGARDING THE USE AND CARE OF THIS PRODUCT.**

#### WARNING

THIS INDICATION ALERTS YOU TO THE FACT THAT IGNORING THE CONTENTS DESCRIBED HEREIN CAN RESULT IN POTENTIAL DEATH OR SERIOUS INJURY.

#### NOTICE

This indication alerts you to the fact that ignoring the contents described herein may negatively affect product performance and functionality.

#### CAUTION

This indication alerts you to the fact that ignoring the contents described herein can result in potential injury.

#### NOTICE

**IF INSTALLING THIS PRODUCT FOR ANOTHER PARTY, PLEASE MAKE SURE THEY RECEIVE THIS COPY OF THE INSTALLATION INSTRUCTIONS SO THEY ARE AWARE OF THE IMPORTANT INFORMATION CONTAINED IN THEM.**

### TOOLS SUGGESTED

Set of Standard or Metric (depending on model of bike) Hex Wrenches, Set of Torx Wrenches, Flat Blade Screwdriver

**STRICTLY OBSERVE THE FOLLOWING GUIDELINES IN ORDER TO USE THE PRODUCT PROPERLY AND AVOID POTENTIALLY DANGEROUS ACCIDENTS.**

### STEP 1

Read and understand all steps in the instructions before starting the installation. Park the motorcycle on a hard, level surface and turn off the ignition.

### CUSTOMER SERVICE

877.370.3604 (toll free)

### INSTALLATION QUESTIONS

techsupport@kuryakyn.com  
or call 715.247.2983

### LIMITED WARRANTY

Kuryakyn warrants that any Kuryakyn products sold hereunder, shall be free of defects in materials and workmanship for a period of one (1) year from the date of purchase by the consumer excepting the following provisions:

- Kuryakyn shall have no obligation in the event the customer is unable to provide a receipt showing the date the customer purchased the product(s).
- The product must be properly installed, maintained and operated under normal conditions.
- Kuryakyn makes no warranty, expressed or implied, with respect to any gold plated products.
- Kuryakyn shall not be liable for any consequential and incidental damages, including labor and paint, resulting from failure of a Kuryakyn product, failure to deliver, delay in delivery, delivery in nonconforming condition, or for any breach of contract or duty between Kuryakyn and a customer.
- Kuryakyn products are often intended for use in specific applications. Kuryakyn makes no warranty if a Kuryakyn product is used in applications other than intended.

• Kuryakyn electrical products are warranted for one (1) year from the date of purchase by the consumer. L.E.D.'S contained in components of Kuryakyn products will be warranted for defects in materials and workmanship for 3 years from the date of purchase where as all other components shall be warranted for one(1) year. This includes, but is not limited to; control modules, wiring, chrome & other components.

• Kuryakyn makes no warranty of any kind in regard to other manufacturer's products distributed by Kuryakyn. Kuryakyn will pass on all warranties made by the manufacturer and where possible, will expedite the claim on behalf of the customer, but ultimately, responsibility for disposition of the warranty claim lies with the manufacturer.

### ABOUT OUR CATALOG

For purchasing Kuryakyn® products, you can receive a complete catalog free of charge.

Send the Proof-of-Purchase below with your address to: Kuryakyn, P.O. Box 339, Somerset, WI 54025.

Please indicate either Accessories Catalog for Harley-Davidson® or GL & Metric Cruisers.

Be sure to ask your local dealer about other Kuryakyn® products, the motorcycle parts and accessories designed for riders by riders.

©2005 Kuryakyn USA® All Rights reserved.



kuryakyn.com

## NOTICE

**Avoid damage to the motorcycle. Protect painted surfaces with a soft cloth or blanket.**

**Küryakyn®**

**STEP 2** Place a clean, soft blanket over the gas tank to protect the paint.



**CAUTION** Ensure that the installation of this product does not interfere with the proper operation of the motorcycle before riding.

## NOTICE

**It is the installer's responsibility to ensure that there is adequate clearance between the Perch Mount and any painted surfaces. Küryakyn is not responsible for any damage due to inadequate clearance.**

## NOTICE

**Be aware of any cables/wires that could potentially be pinched or crushed while using this product.**

**STEP 3** Remove the bottom screw securing the clutch or brake perch halves. The arm will usually point towards the center of the bike. Set this aside, it will not be used again.

**STEP 4** Identify the correct screw, either the metric or standard, by comparing threads on the included screws to the threads from the screws that were removed. The 1/4"-20 x 2-1/4" screws are generally used on older H-D motorcycles, the 1/4"-20 X 2" screws on newer Harleys and the M6 X 1.0 X 55mm on Metric bikes.

## NOTICE

**Use the supplied anti-seize for fasteners; this will prevent galling and make future removal of fasteners easier.**

**STEP 5** As shown in PIC 1, insert the two included spacers into the two slots in the perch mount. Place a washer over one of the button socket cap screws, then insert it through the bottom spacer on the perch mount arm. Add a dab of anti-seize to the screw end.

**STEP 6** As shown in PIC 2, place the arm, screw, washer and spacer on the perch and start the screw. Finger tighten the screw.

**STEP 7** Remove the upper screw securing the perch mounting halves; it will not be used again. PIC 2

**STEP 8** Rotate the arm up into position and install the screw, and washer while using a dab of anti-seize on the screw end. PIC 3

**STEP 9** Tighten both of the screws securely.

**STEP 10** Locate the Smart Phone Pouch. Remove the brass screw from the mounting pad on the back of the Pouch. PIC 4

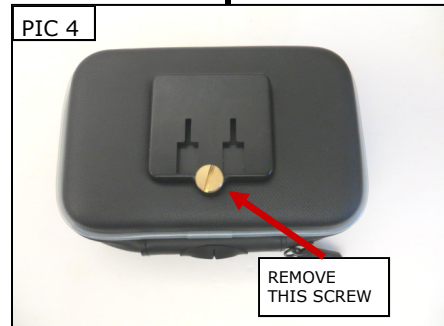
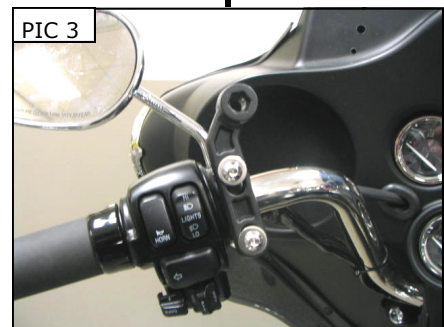
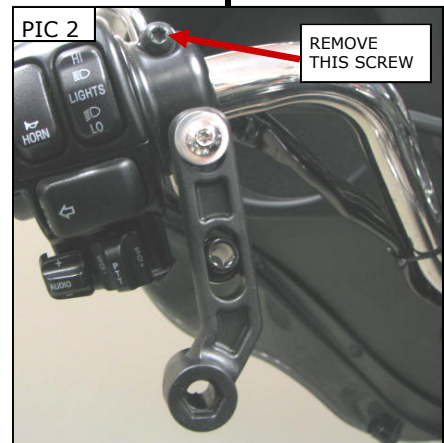
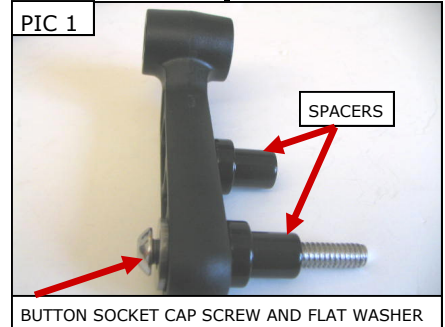
**STEP 11** Place the Pivot Mount assembly into the mounting pad by lining up the feet on the pivot mount with the larger openings in the mounting pad. PIC 5 Insert the feet into the openings and slide the legs of the pivot mount assembly into the slots in the mounting pad until they stop. PIC 6

**STEP 12** Thread the brass screw removed in Step 10 into the bottom of the mounting pad to secure the pivot assembly into the mounting pad. PIC 7 Tighten securely.

**STEP 13** Install the Smart Phone Pouch/pivot mount to the perch mount by inserting the metal shaft on the back of the pivot mount through the hole in the perch mount. The hex flats on the metal shaft will line up with the hex flats in the hole. PIC 8 Secure the Accessory Mount with the included 1/4" flat washer, then the 1/4" lock washer, then the Acorn nut. PIC 9 Tighten securely.

**STEP 14** Turn the handlebars in both directions to their full stop position and ensure that there is clearance between the Smart Phone Pouch and the gas tank, dash and other accessories.

-cont.-



**PAGE  
2**

**SMART PHONE POUCH with PERCH MOUNT**

**INSTALLATION**



**ENSURE THAT THERE IS CLEARANCE AT ALL POINTS WHEN THE HANDLEBARS ARE TURNED. INSUFFICIENT CLEARANCE MAY CAUSE DAMAGE TO THE MOTORCYCLE OR CAN CAUSE LOSS OF CONTROL THAT COULD RESULT IN SERIOUS INJURY OR DEATH.**



**TO PREVENT POSSIBLE LOSS OF CONTROL, WHICH COULD RESULT IN SERIOUS INJURY OR DEATH, WE DO NOT RECOMMEND REMOVING, REPLACING OR ADJUSTING THE DEVICE IN THE POUCH WHILE RIDING THE MOTORCYCLE.**

## NOTICE

**It is the installer's responsibility to ensure that all of the fasteners (including pre-assembled) are tightened before operation of the motorcycle. Küryakyn will not provide warranty coverage on products or components lost due to improper installation or lack of maintenance. Periodic inspection and maintenance are required on all fasteners.**

## REMOVING THE SMART PHONE POUCH

### STEP 1

To remove the Smart Phone Pouch from the bike for storage, loosen the tension-nut on the back side of the Pouch until it clears the threads. PIC 9 Snap the Smart Phone Pouch off of the ball. Remove the tension nut and thread it to the Smart Phone Pouch for storage.

### STEP 2

To replace the Smart Phone Pouch on the swivel ball, remove the tension nut from the back. Slide the tension nut over the swivel ball, snap the Smart Phone Pouch back on the swivel ball and thread the tension nut onto the Smart Phone Pouch. Tighten the tension nut to the desired tension.

### STEP 3

To adjust the angle of the Smart Phone Pouch, loosen the tensioning nut, adjust the Smart Phone Pouch to the desired position and tighten the tension nut. PIC 9 The tension nut will allow you to keep the Smart Phone Pouch in the same position or, with a little less tightness, allow you to move the Smart Phone Pouch on the swivel ball.



**DO NOT ATTEMPT TO OPERATE OR REMOVE THE MOBILE DEVICE FROM THE POUCH WHILE OPERATING THE MOTORCYCLE.**

## NOTICE

**Ensure that the Mobile Device is secure in the GPS Pouch. Küryakyn is not responsible for any Device that is stolen or damaged from use in this Pouch or from the Pouch not being properly secured to the motorcycle. It is the installer's responsibility to ensure that all of the fasteners (including pre-assembled) are tightened before operation of the motorcycle. Küryakyn will not provide warranty coverage on products or components lost due to improper installation or lack of maintenance. Periodic inspection and maintenance are required on all fasteners.**

## NOTICE

**Motorcycling can be done in a harsh environment. Make sure your Mobile Device is appropriate for this application.**

